

タケムラ テクノワークス セレクション ボックス ユニット

TAKEMURA TECHNO WORKS SELECTION BOX UNIT



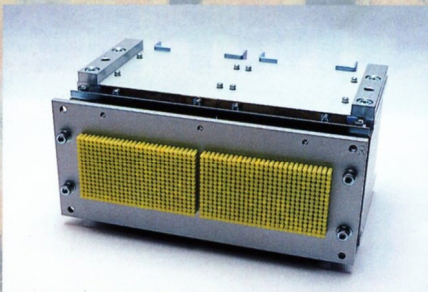
Takemura Techno Works co.,ltd.

PIONEERING NEW TECHNOLOGY IN JACQUARD

TAKEMURA SELECTION BOX UNIT

1 Attachable to Any Jacquard of Any Maker

The Takemura selection box can be installed on any type of jacquard. T T W offers all kinds of machinery such as Vincenzi pitch, Endless paper(Verdol) type, and course pitch(for Nishijin). It is also suitable for all kinds of textile, including single-acting, double-acting, and three-position jacquards etc, from low to high speed.



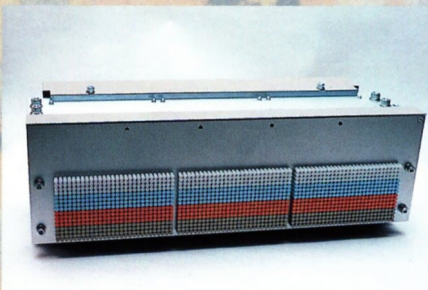
VINCENZI CARD TYPE 880 HOOKS

2 Current Jacquard Immediately Electrically Computerized

Current jacquard looms can be installed without changing the looms, rebuilding materially or changing the harness, at a minimum of down time and expense related to installation.

3 Easy Specimen

Our system ensures a quick response and flexible production system because there is no need for punching jacquard cards. There is no need for any cost of punching cards after this. Created weaving patterns once installed are saved to the large capacity of a hard disk and can be woven again at anytime.



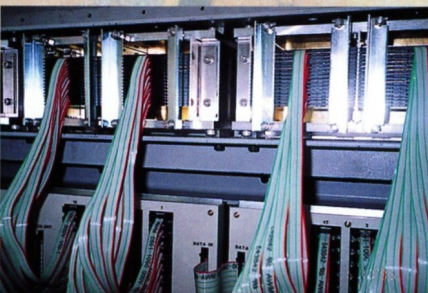
ENDLESS PAPER TYPE 1344 HOOKS

4 Easy Maintenance

If a cassette should have any problem, you can make a repair by changing it quickly and easily at the back of selection box.

5 High Productivity

There is no doubt your productivity will rise without all the troubles caused by damaged cards and the complication of changing cards for each new design.



EASY MAINTENANCE

6 Enables Speed-Up of Weaving

We ensure the running speed of the loom itself with no restriction of speed by the jacquard cards.

Adoption of Piezo Electric Ceramic

New Generation of Technology

This new technology, which replaces solenoids, realizes a high reliability with the development of mechanically and physically stable ceramics which show almost no deterioration in piezo performance.

Economical Power Consumption

In contrast to solenoids, the electric power consumption can be reduced to less than 1/10. On the 1344 hooks setting, operational power consumption is less than 20 watts.

No Trouble in the Mid summer

Under the solenoid system, exothermic heat becomes a big problem, on the other hand, piezo generates hardly any heat and you don't need a cooling fan. Using our system in the tropics or the midsummer is no trouble at all.

High Speed

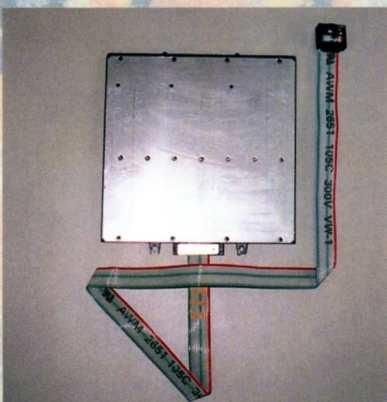
We guarantee super high speed and an errorless driving force thanks to the piezo system.

Long Life

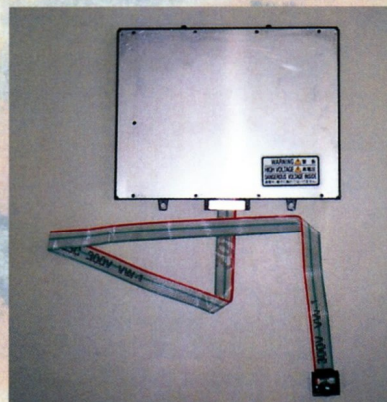
Our system ensures a long and stable operational life because of the high piezo effect and low performance-deterioration of the ceramics.

Minimal Space Requirement

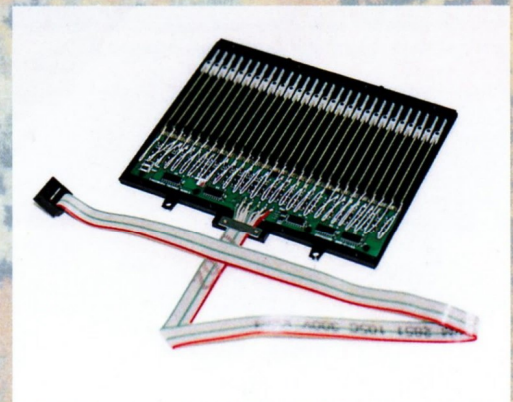
As a result of making the best use of the piezo, the body, electric power box and cassettes have been reduced to less than half their former size and weight. Only a small space is needed. Expense of their delivery is kept to a minimum.



VINCENZI CASSETTE



ENDLESS CASSETTE



INSIDE OF A CASSETTE

■ For Carpet (Endless Paper Type • Vincenzi Type)

Piezo ceramics made Takemura SB system with a good reputation and achievements for many years throughout the world much more stable and light. Just the one controller can control up to 16 heads of a jacquard just as efficiently as a single machine. It is no longer necessary to pay attention to the number hooks per cards. On the monitor of each controller, there are a lot of options to arrange the carpet, set the number of controlled weaving patterns and the sequence of weaving etc. No matter what kind of harness, any design can be used for any type of jacquard loom.

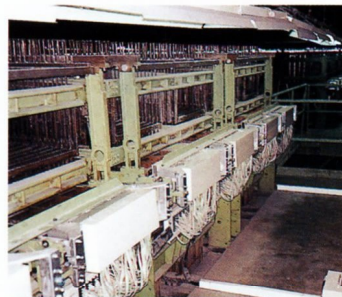


SCHONHERR (TEKSTIMA)

Vincenzi 880



SCHONHERR VINCENZI JACQUARD (TEKSTIMA)



VAN DE WIELE JACQUARD

MICHEL VAN DE WIELE nv

- | | |
|------------|--|
| 1 Vincenzi | 880, 1320 hooks |
| 2. Endless | JRT 1344 hooks for one, two, and three shots |



SCHLEICHER 2 SHOT JACQUARD

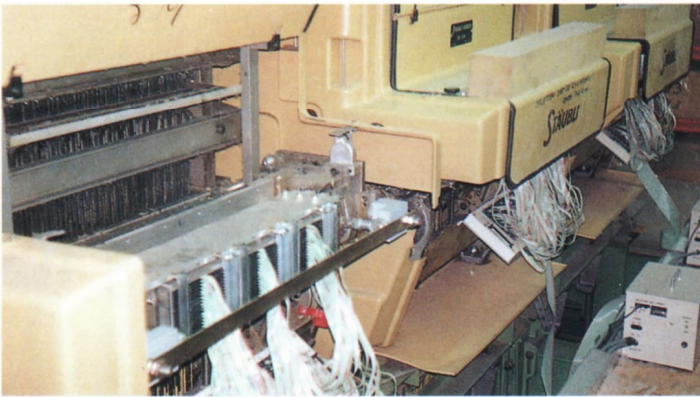
SCHLEICHER

Endless 1344 hooks, 2 shots

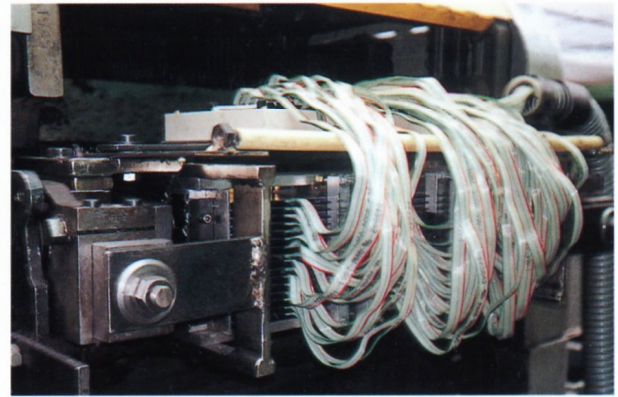
■ For Double-Acting Jacquard (Endless Paper Type)

Suitable for any type of mechanical jacquard manufacturer of the endless paper type (Verdol type) for towels, ties, curtains, upholsteries, and moquettes etc.

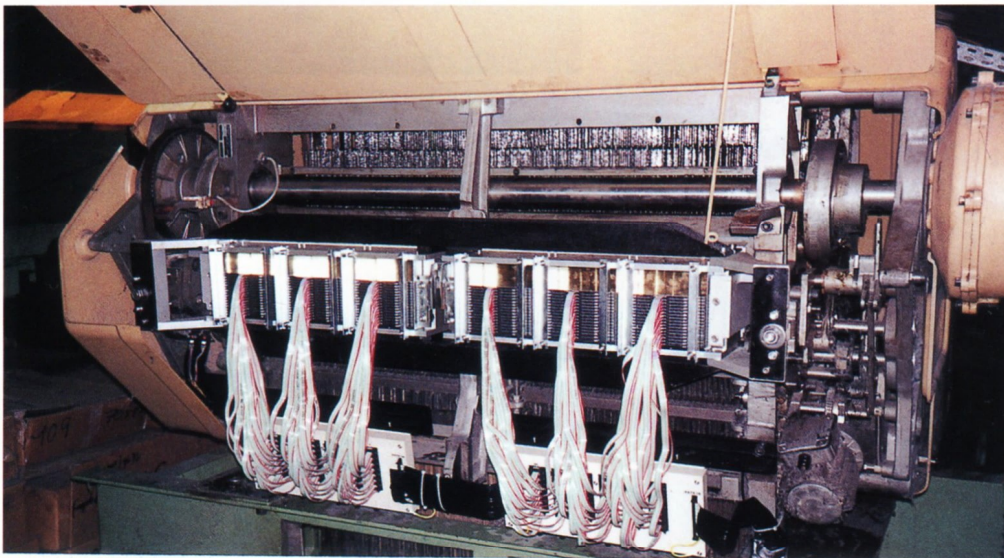
STÄUBLI CR420, CR520, CR620,
GROSSE UNIRUPID
BOBBIO / FIMTESSILE / SCHLEICHER (MURATA)
OLD ZANGS / OLD VERDOL (YAMADA V200, V250, V350) etc.



STÄUBLI CR520



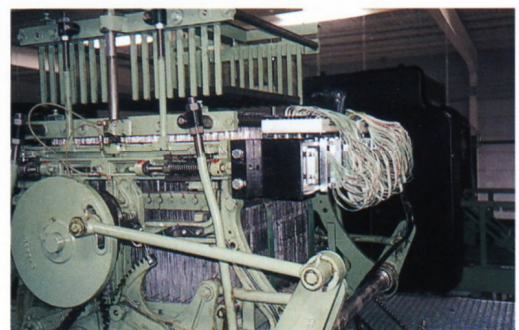
BOBBIO JACQUADS



STÄUBLI CR620

■ For Vincenzi Jacquard

We offer a Vincenzi jacquard type, the former standard for the 4mm pitch type lined sixteen deep, with the piezo ceramics type. 880, 1320, 1760 needles (hooks)



GIROPAN JACQUARD ON METEX LOOM

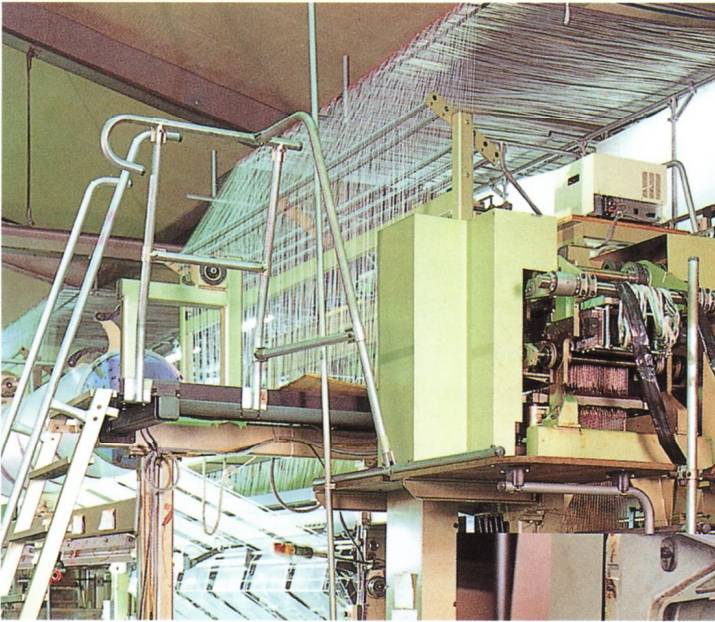
■ For Warp Knitting Machine

Curtain Lace

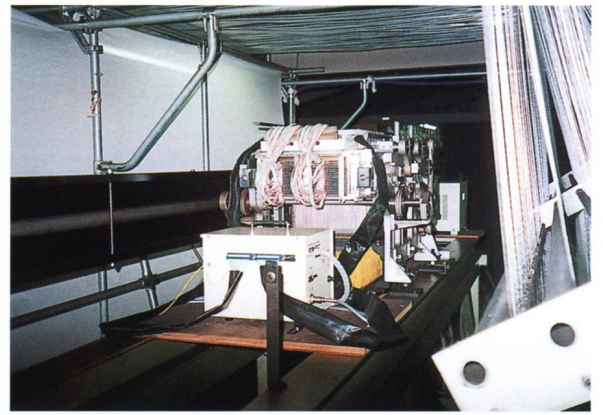
Just the one controller can control up to 16 heads of a jacquard just as efficiently as a single machine. It is no longer necessary to pay attention to the number hooks per cards.

Rachel Lace

The one controller can control multiple head jacquards controlled on different time settings, and summing jacquards on either side.



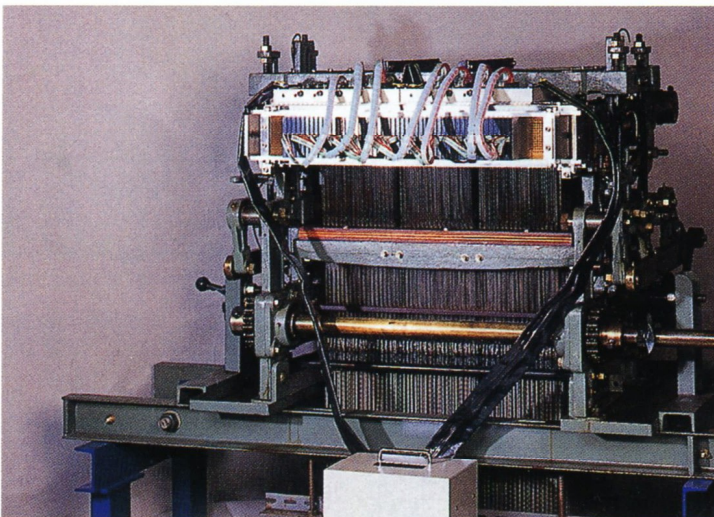
MAYER JACQUARD ENDLESS896, 1344HOOKS



ENDLESS896, 1344HOOKS

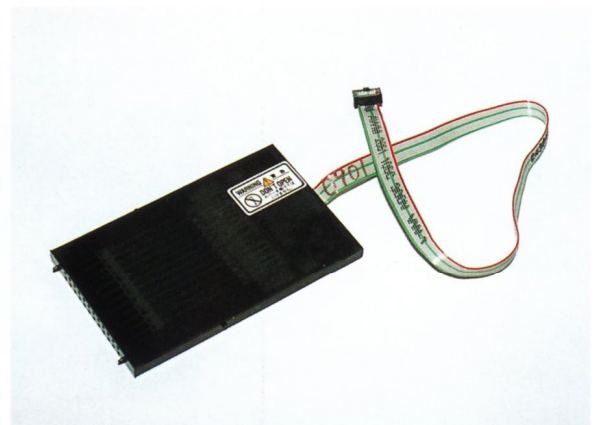
■ For Nishijin Pitch Jacquard

A vertical cassette type such as the Nishijin pitch jacquard with 600, 900, 1200, or 1300 needles has also been developed with newly improved piezo ceramics.



NISHIJIN PITCH JACQUARD 1200HOOKS

- Suitable for various numbers of hooks(400/600/900/1200/1300)for Nishijin pitch(5.13mm).
- For easy maintenance,changing a cassette is simplified.



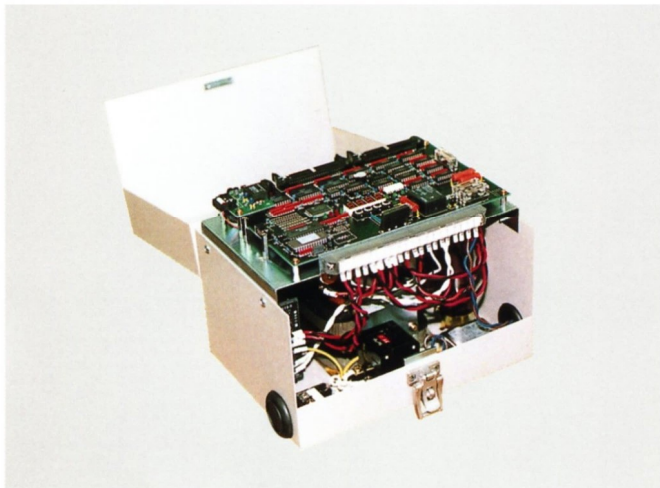
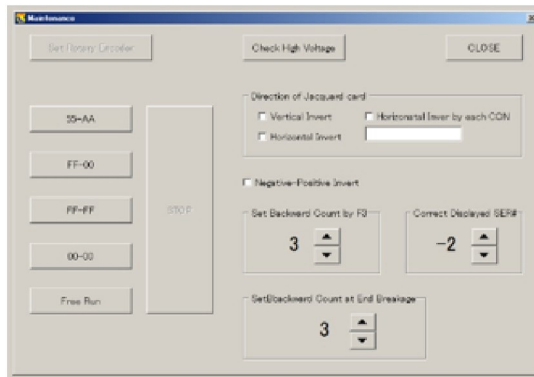
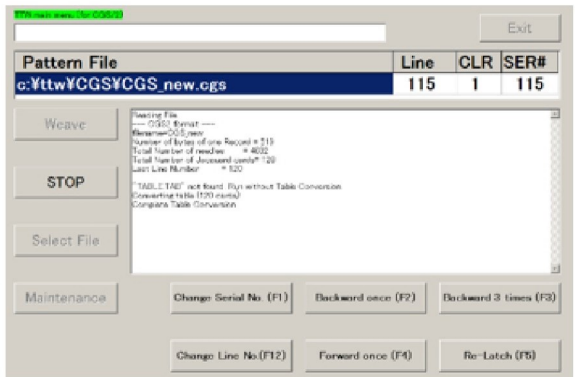
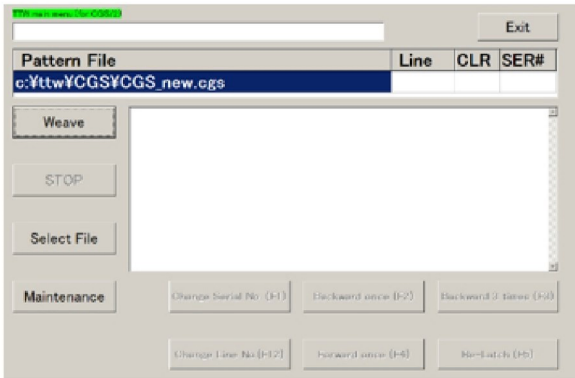
NISHIJIN PITCH CASSETTE

Controller

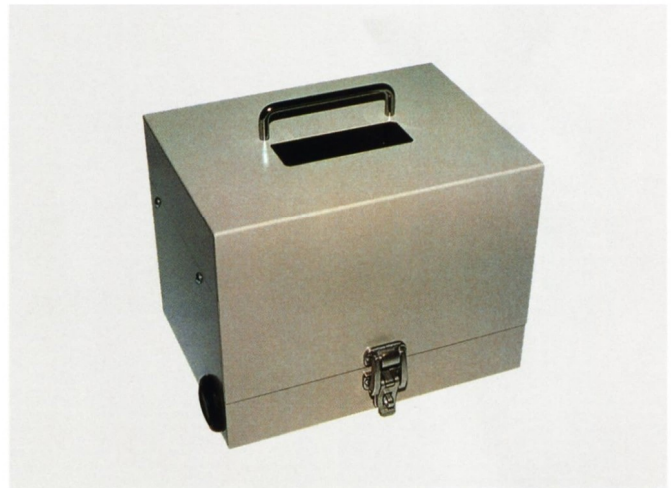
Easy operation

Familiar user interface using Windows PC as controller.

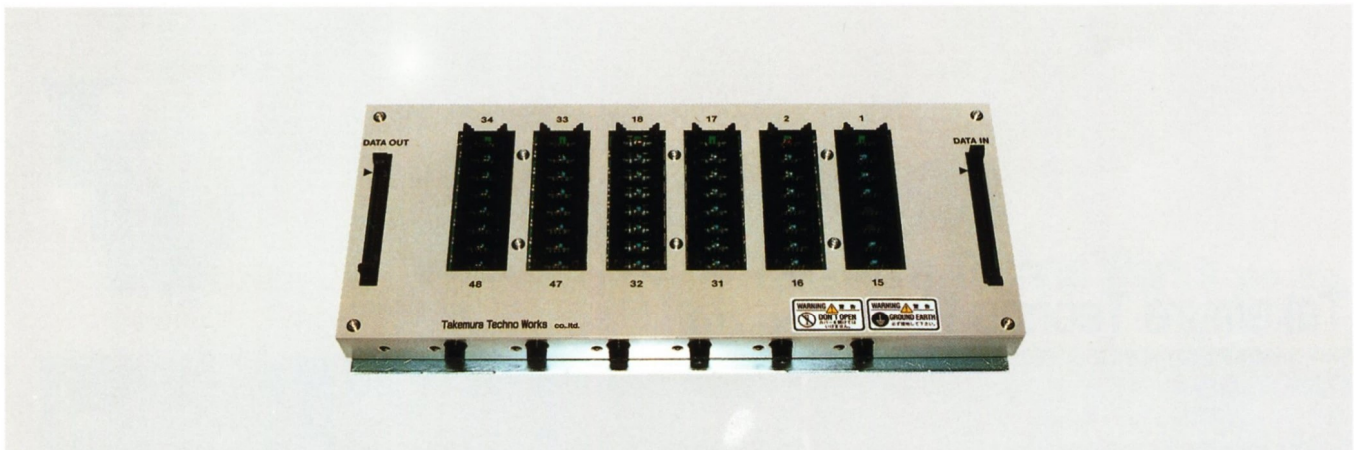
Weaving software is provided for your pattern data in major electronic jacquard manufactures' format, which can be saved on any storage device such as USB flash drive, memory card, etc. or sent through internet / e-mail.



DRIVER BOX(INSIDE)



DRIVER BOX(OUTSIDE)



CONNECTOR BOARD 1344

SB BODIES

MODEL	TYPE(PITCH)	NEEDLES	DIMENSIONS(mm)	WEIGHT (kg)	REMARKS
SB-HE 896	Endless (5.2mm)	896	353×200×180	10.6	INCL. CASSETTES
SB-HE 1344	↑	1344	503×200×180	16.5	//
SB-HE 1792	↑	1792	654×200×180	25.0	//
SB-HN 400	Nishijin (5.13mm)	436	365×160×150	10.0	//
SB-HN 600	↑	660	365×160×150	13.0	//
SB-HN 900	↑	1016	510×160×150	19.0	//
SB-HN 1200	↑	1256	665×160×150	24.0	//
SB-HV 896	Vincenzi (4mm)	896	280×200×140	9.1	//
SB-HV 1344	↑	1344	396×200×140	14.5	//
SB-HV 1792	↑	1792	554×200×140	21.0	//

ACCESSORIES

MODEL	TYPE(PITCH)	NEEDLES	DIMENSIONS(mm)	WEIGHT (kg)	REMARKS
CONTROLLER	COMMON TO EACH TYPE	—	300×250×225	6.2	
DRIVER	↑	—	280×210×270	10.0	
CONNECTOR BOARD 1344	↑	1344	380×270× 50	3.3	ALL ATTACHMENTS
CONNECTOR BOARD 896	↑	896	290×270× 50	2.6	//



TAKEMURA TECHNO WORKS CO., LTD.

40, Takeda-Fukenogawa-cho, Fushimi-ku, Kyoto, 612-8454, JAPAN

TEL +81-75-604-3252 FAX +81-75-603-3664 E-mail: info@ttw.co.jp

URL: <http://www.ttw.co.jp>